



Select Linus Hanging Rail

A premium system with 10x30 steel rail, and aluminium supports finished to match. Linus is accurately made with an excellent load capacity.

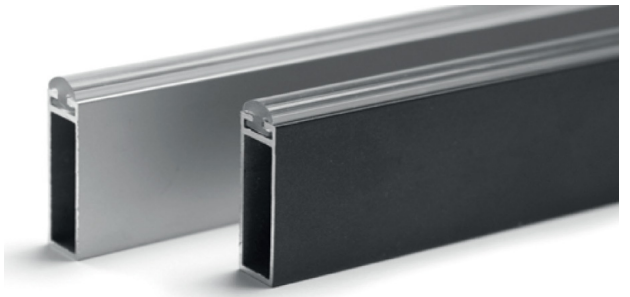
Code	Length	Finish
CFN500	2500mm	Silver
CFN501	2500mm	Black
CFN502	2500mm	Bronze



Select Linus Hanging Rail

A premium system with 10x30 steel rail fitted with a clear protective profile to prevent scratches from hangers. Linus is accurately made with an excellent load capacity.

Code	Length	Finish
CFN503	2500mm	Silver
CFN504	2500mm	Black
CFN505	2500mm	Bronze



Select Linus Brackets

Linus hanging rail brackets suitable for use on the Linus and Linus Plus hanging rails.

Code	Type	Finish
CFN506	Right Hand End Bracket	Silver
CFN507	Right Hand End Bracket	Black
CFN508	Right Hand End Bracket	Bronze
CFN509	Left Hand End Bracket	Silver
CFN510	Left Hand End Bracket	Black
CFN511	Left Hand End Bracket	Bronze
CFN512	Centre Bracket	Silver
CFN513	Centre Bracket	Black
CFN514	Centre Bracket	Bronze



Right Hand End Bracket



Left Hand End Bracket



Centre Bracket