

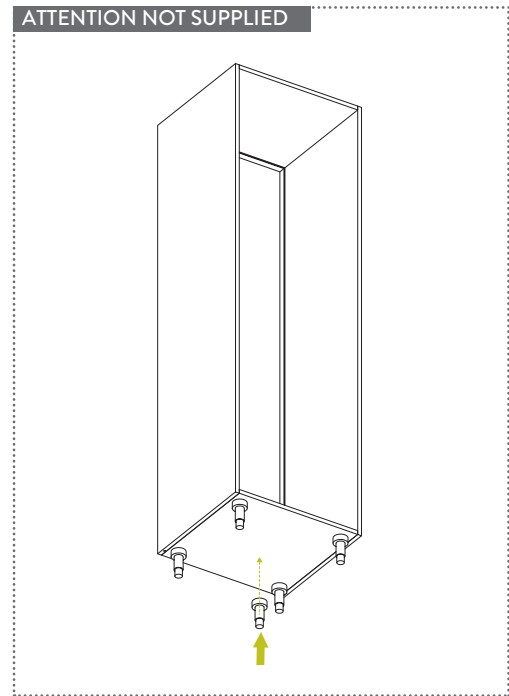
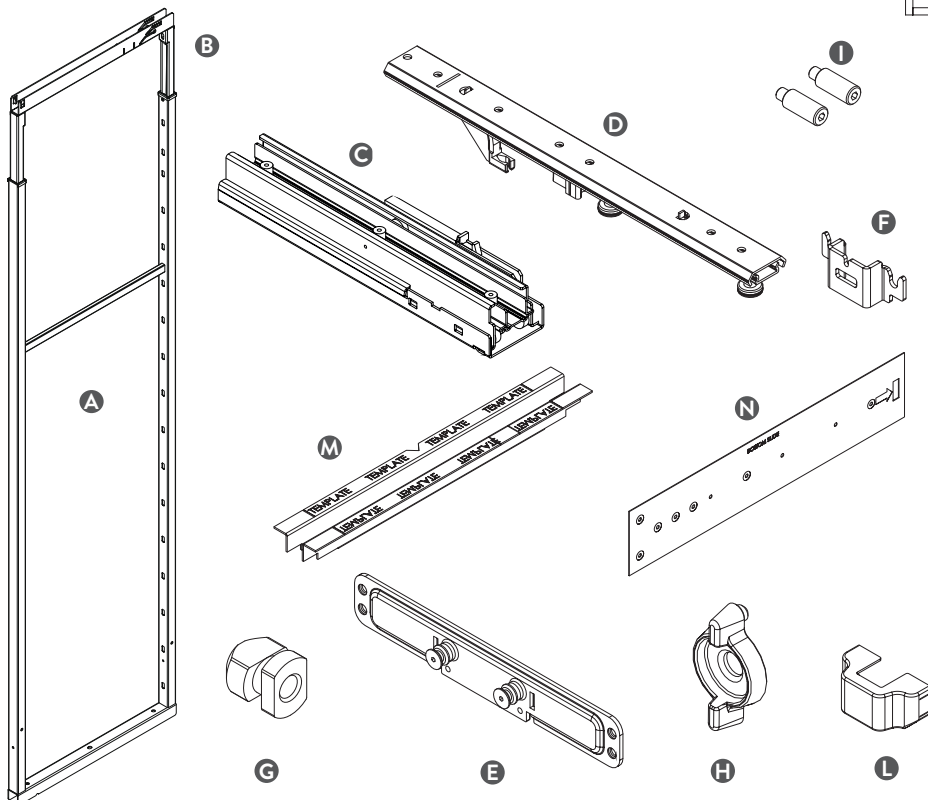
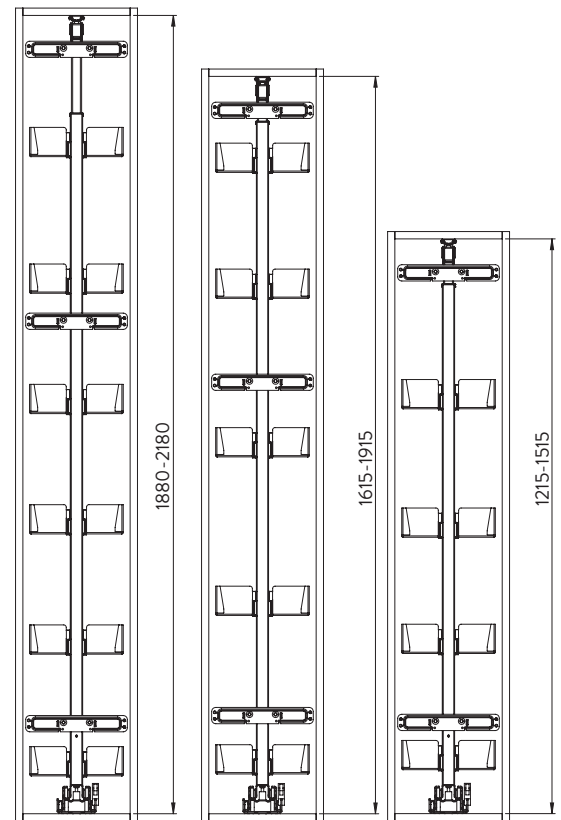


Fitting Instructions: SELECT Larder Pull Out Unit

www.questhardware.co.uk
01280 822062

PARTS

- A. N°1 Lower Frame
- B. N°1 Upper Frame
- C. N°1 Shallow Bottom Runner
- D. N°1 Upper Runner
- E. N°1 Door Bracket
- F. N°1 Door Bracket Frame
- G. N°1 Fixing Support
- H. N°1 Door Adjustment & Tightening Tool
- I. N°2 Pins
- J. N°3 Cover
- K. N°1 Template
- L. N°1 Drilling Template

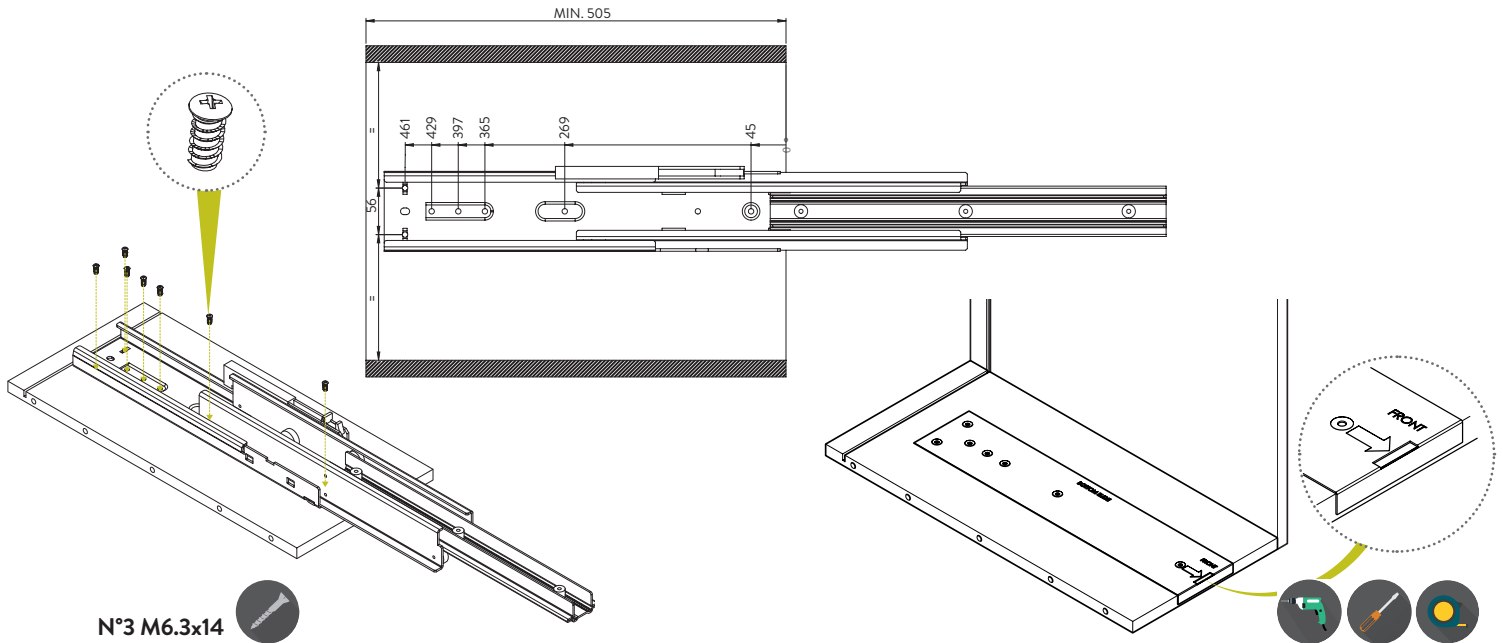


N°7 6.3x14



1

Pre-drill at the indicated dimensions with a 5mm bit, or using the provided template. Successively set the shallow bottom runner C respecting the distances and with fix the screws.

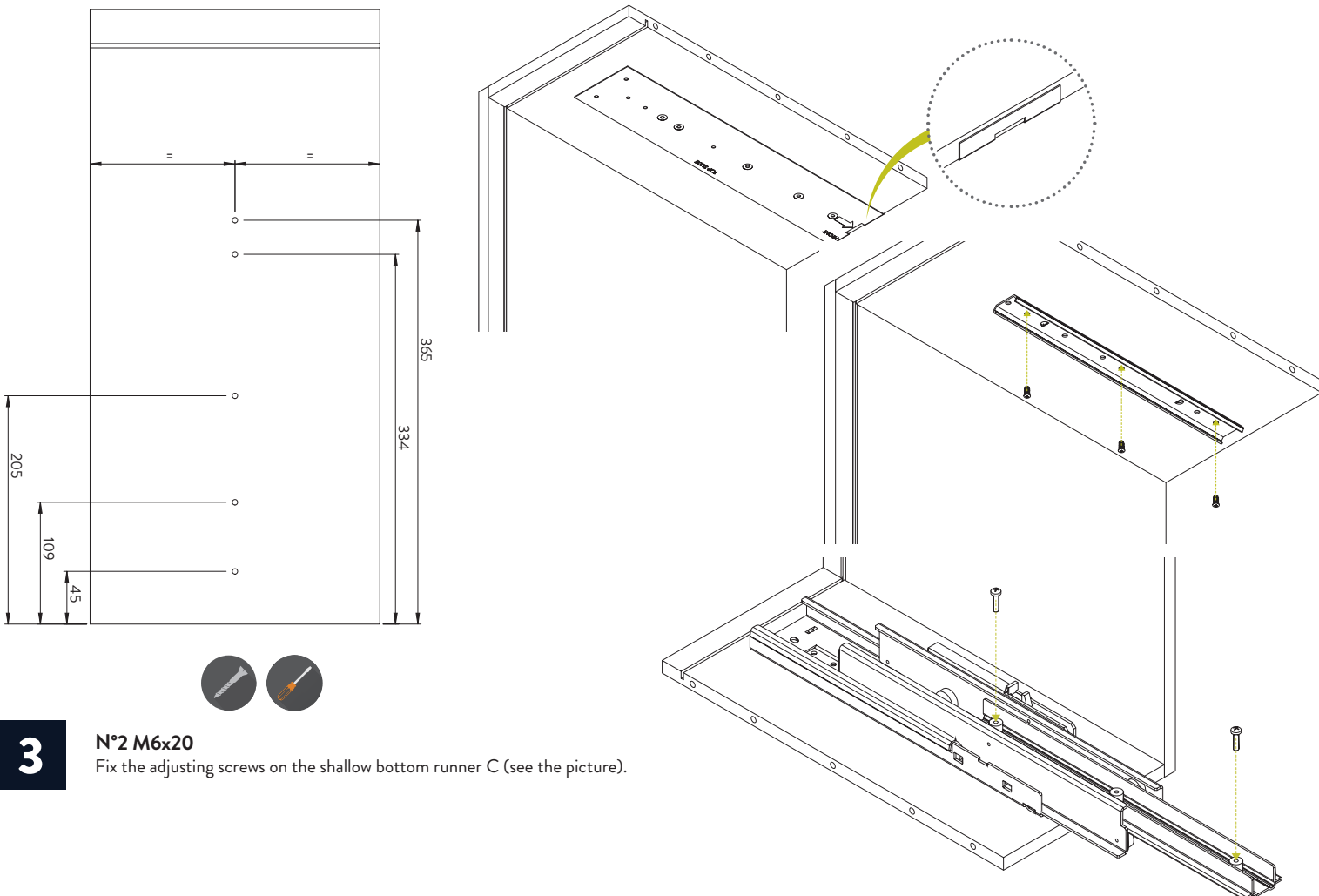


N°3 M6.3x14



2

Pre-drill the upper side of the cabinet with a 5mm diameter bit at the quotas indicated, or using the provided template. Then screw the guide D.



3

N°2 M6x20

Fix the adjusting screws on the shallow bottom runner C (see the picture).

N°1 M6x25



4

Fix the frame A in the shallow bottom runner C open and tighten the screws (see the picture 1).

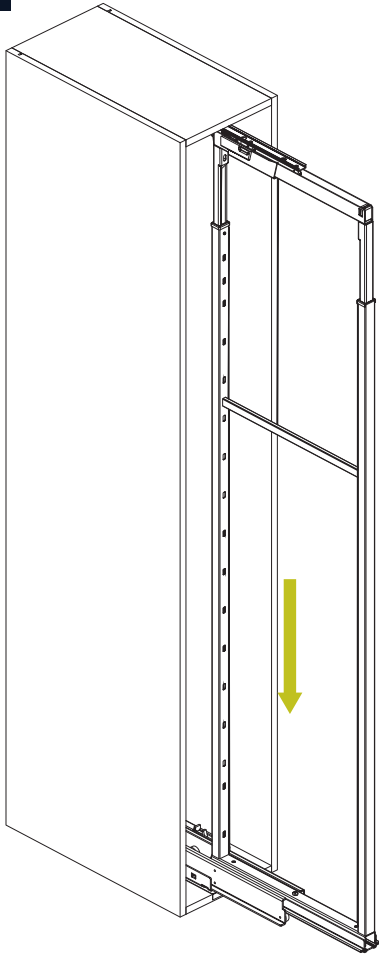


FIG.1

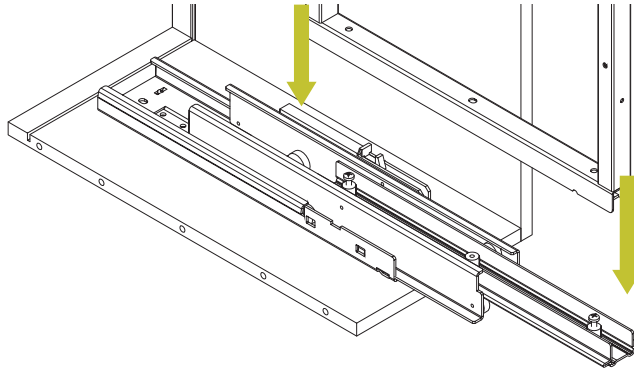
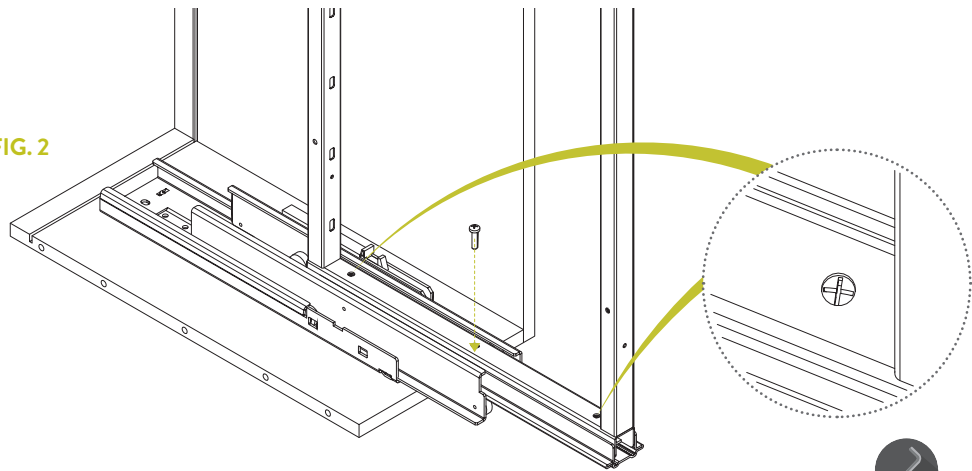
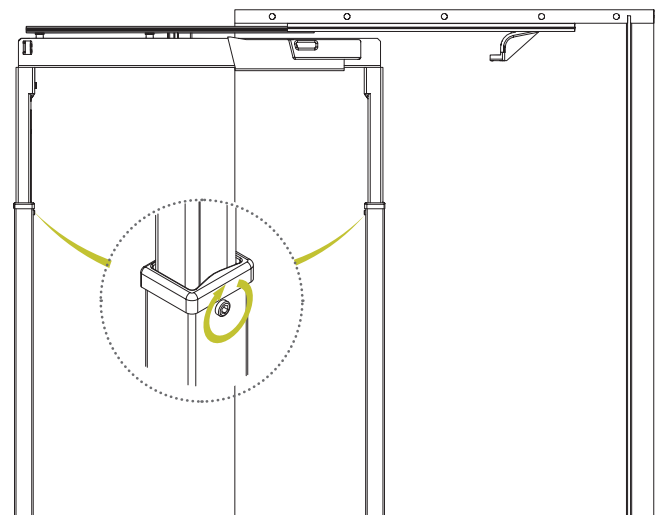
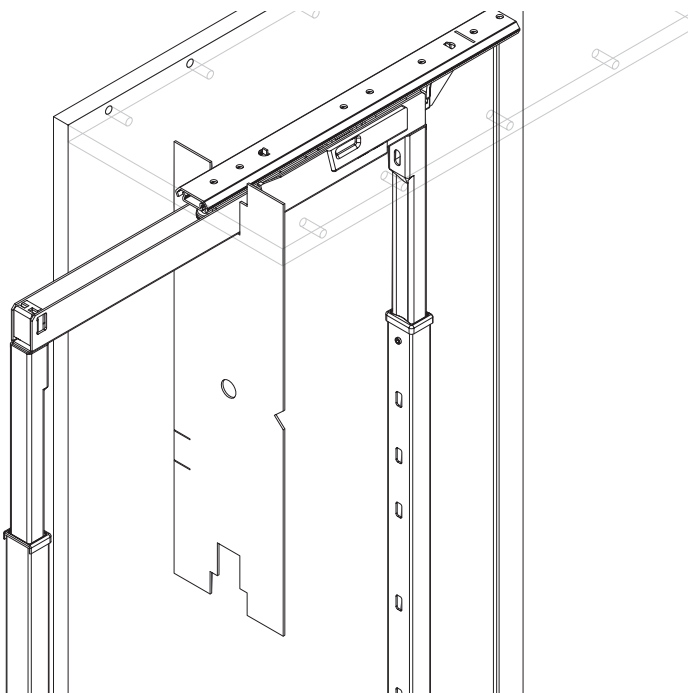


FIG.2



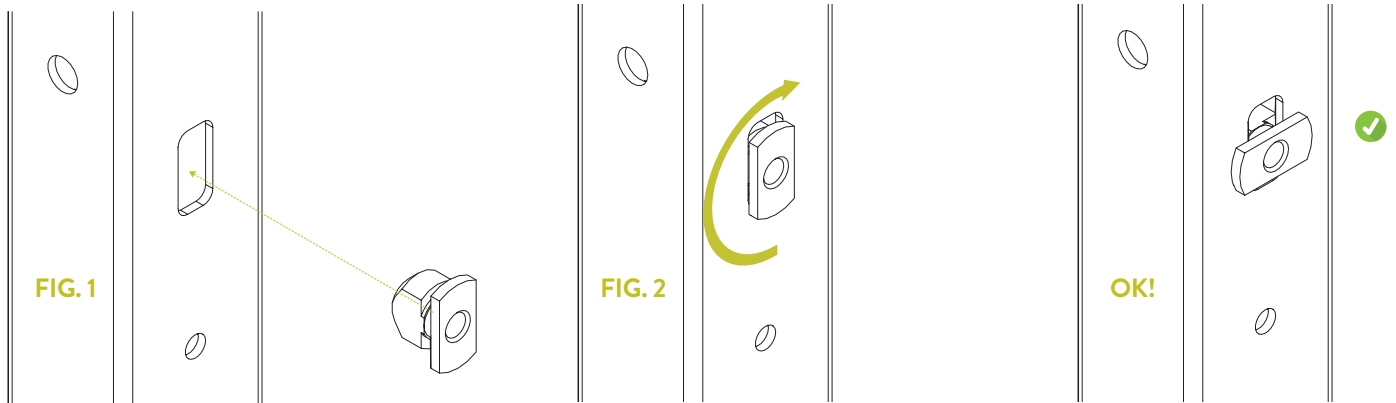
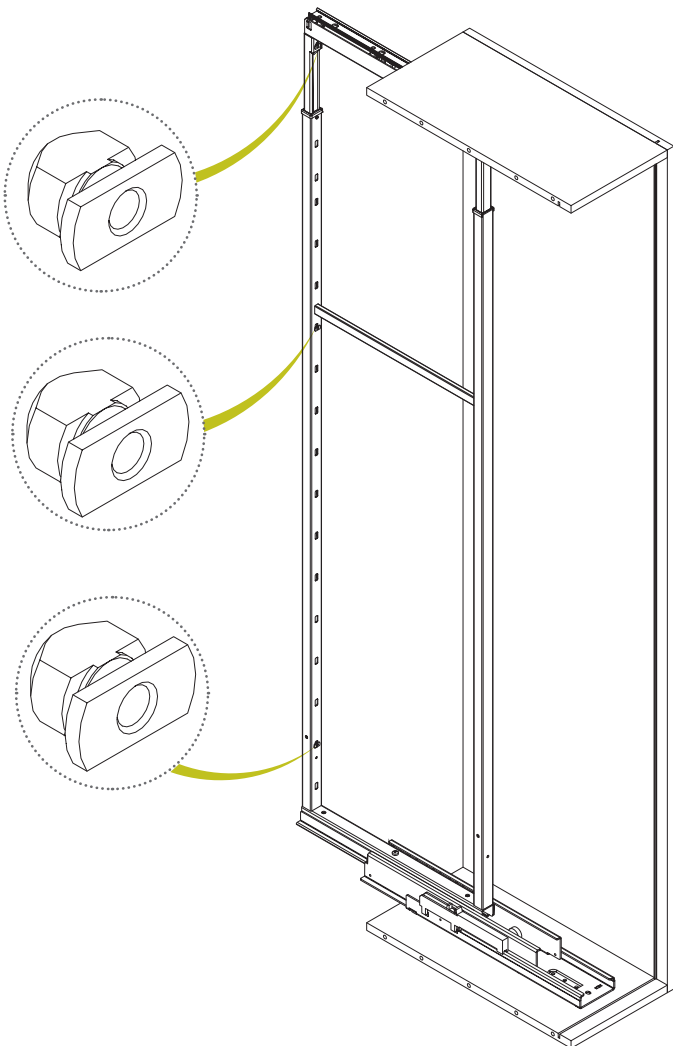
5

Loosen the grains (on the frame A) and slide up the frame B. Block the frame B at the indicated measure by tightening the grains "N". Slide the frame A,B into the top slide D, using the template provided, inside the slide kit.



6

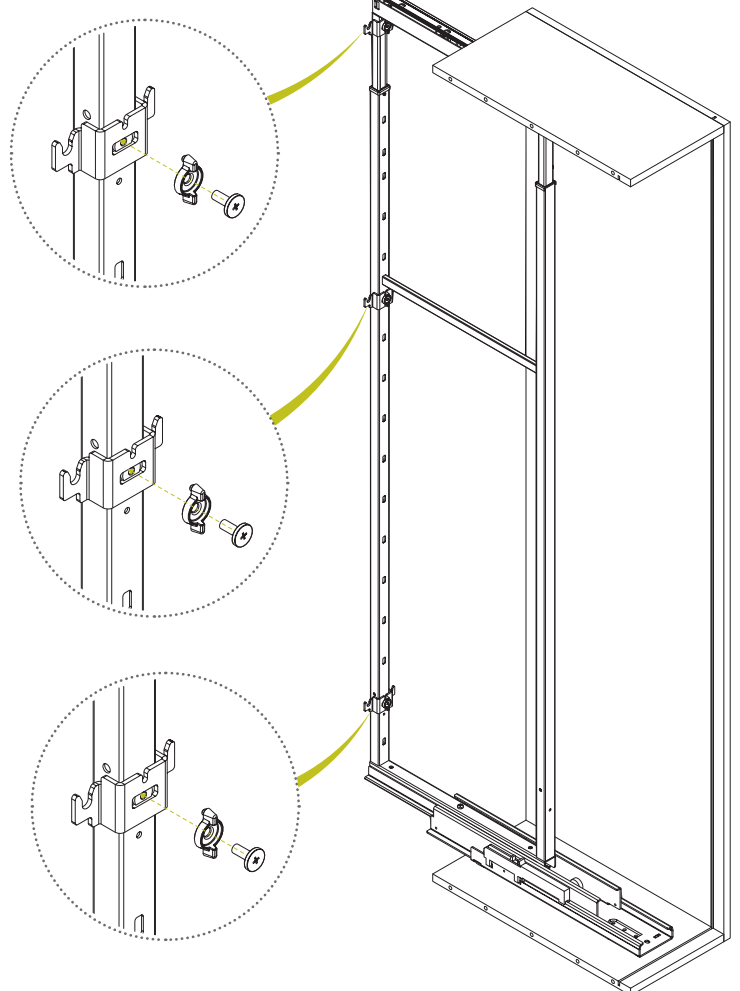
Set the special fixing support G in the frame hole A (see the picture sequence).

**7****8**

N°3 M5x15



Set the door brackets frames F and fix with the special screw.

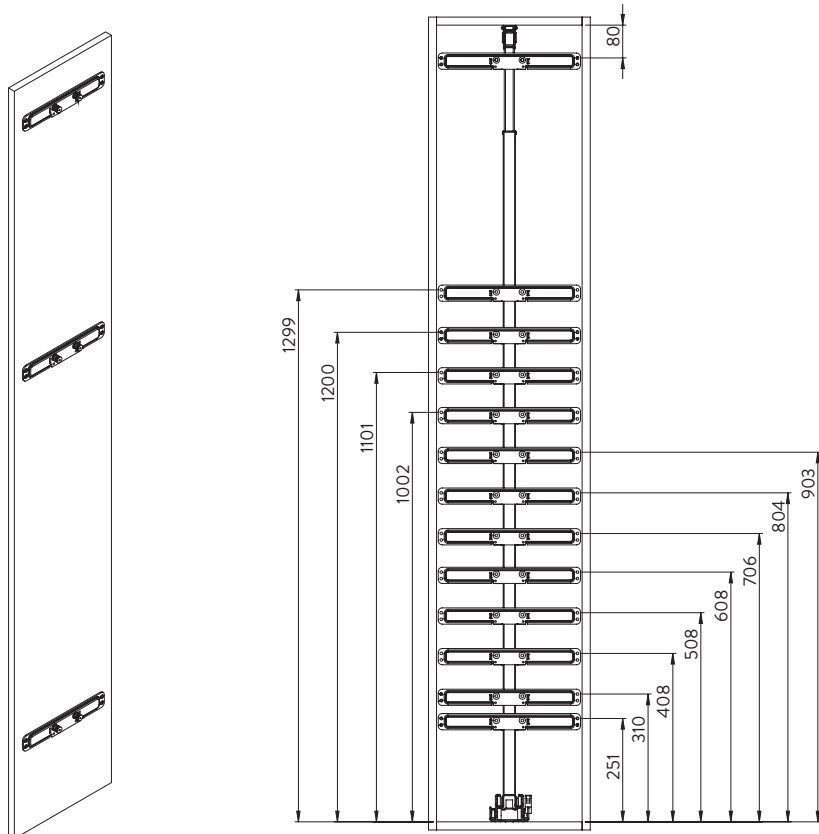


N°12 6.3x14

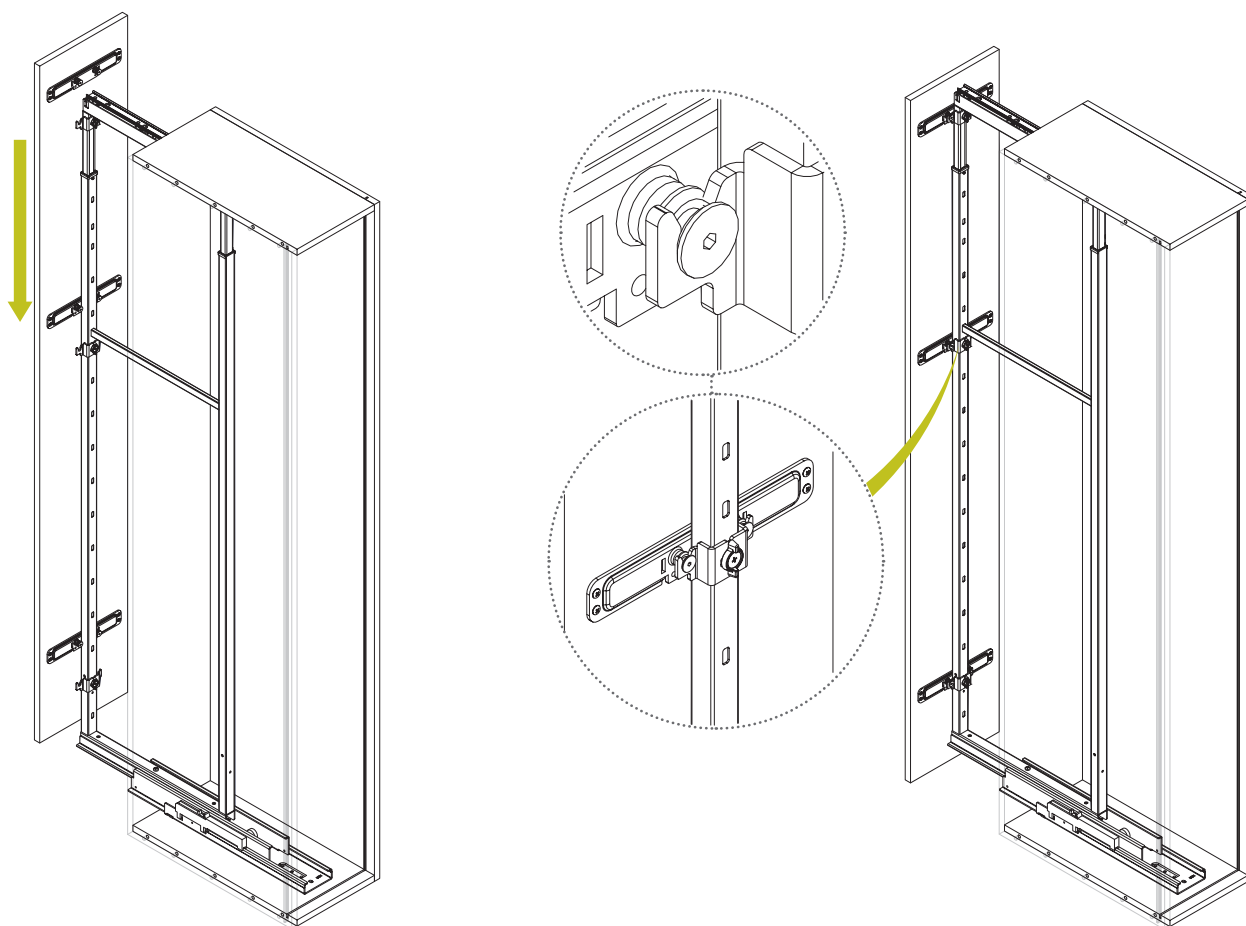
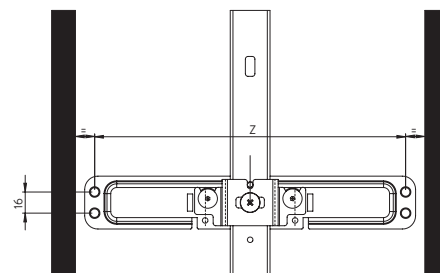


9

Pre-drill with a drill D.5mm at the indicated dimensions, assemble the door bracket E on the door respecting the distances and set it on the door bracket frame F, already assembled.



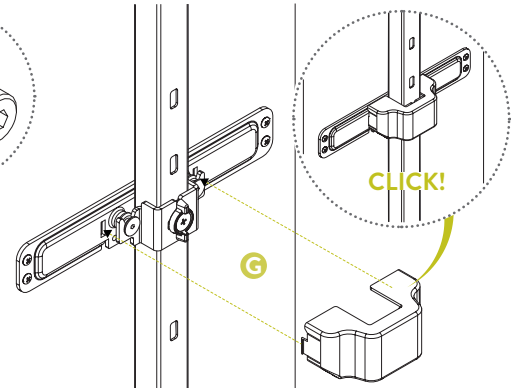
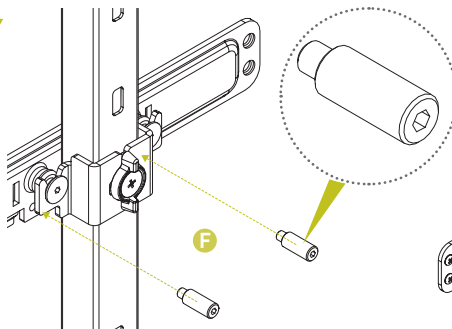
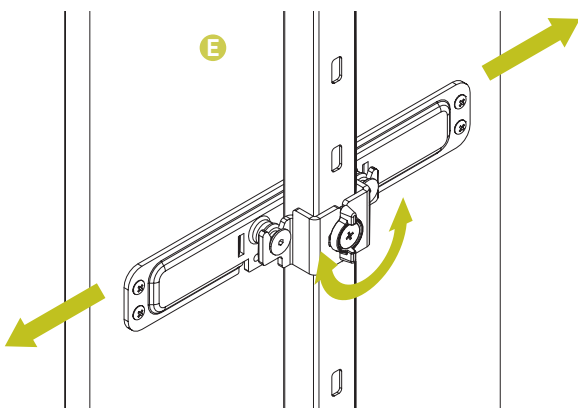
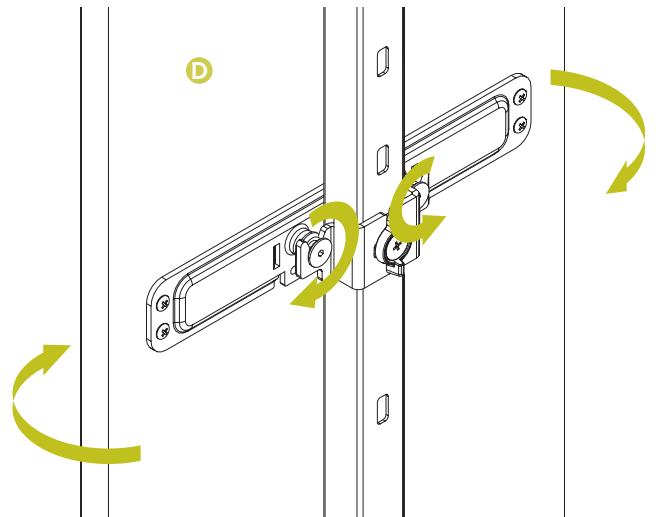
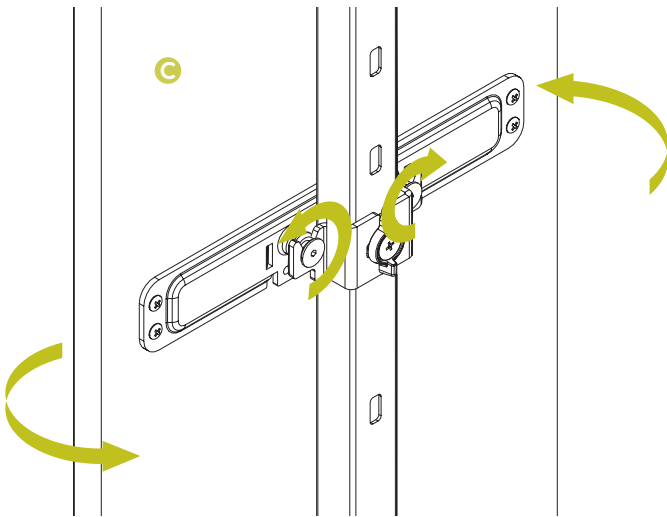
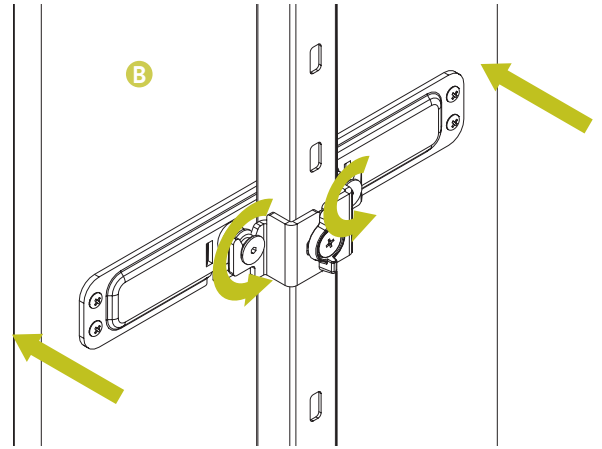
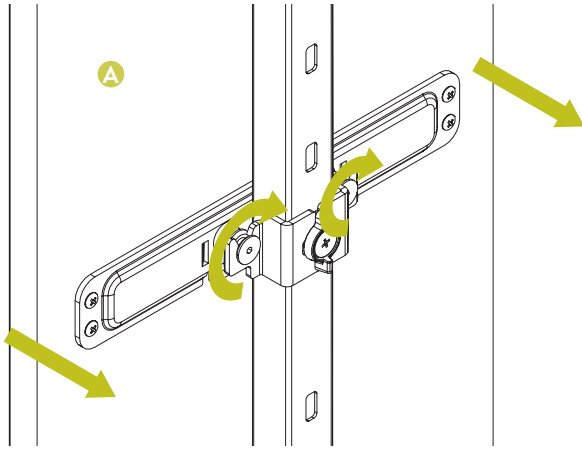
	Z
L 300	235
L 400	335
L 450	385
L 500	435
L 600	535





10

Go on adjusting the door using the appropriate screws, as shown. Then insert the pins "I" and the door attachment cover.



Screw the two pins only in one door connection



To make the adjustment G, screw or unscrew the M6x16 screw. Once adjusted, fix everything by tightening M6x25 screw.

